



K2bio

Novel Hybrid Contract Research Organization

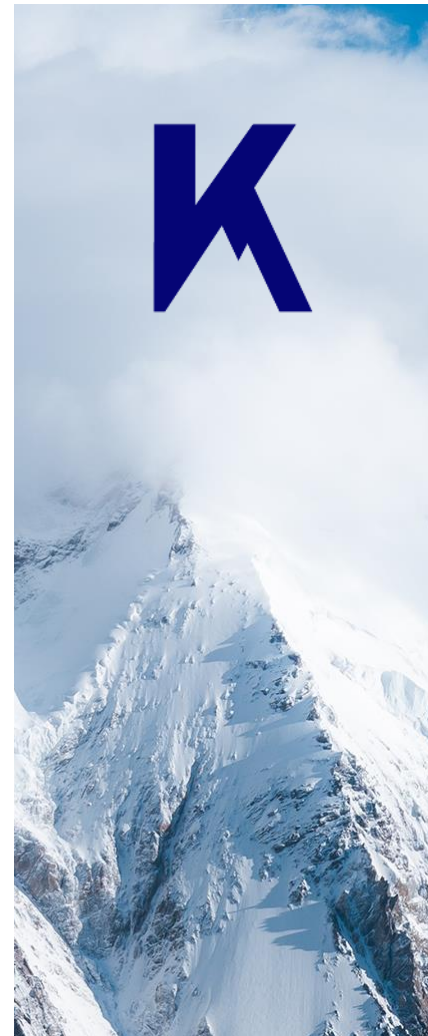
K2bio is a rapidly growing and expanding bio-accelerator and hybrid contract research organization with a focus on cell & gene therapy indications and related services.

We hire scientists and biotech professionals with the specific experience to navigate the peaks and valleys of the product lifecycle.

Our accelerator ecosystem currently houses **14** companies in our ~25,000 square foot state of the art laboratories.



“Research is the beginning, Success the Summit”





Located in Houston, Texas

Expanding Bio-Accelerator

AAALAC-I® Accredited Vivarium

Animal models and husbandry

Analytical & Process Development

Quality Management/Compliance

Immuno-oncology Services

Safety and Preclinical Studies

Custom Research Programs

Flexible Partner



**WHO WE
ARE**

Our mission is to provide our partners with an integrated cost-effective platform and a comprehensive suite of services that support research, development, and commercialization of novel therapeutic products.



K2 Biolabs is creating a collaborative workplace where employees and clients work together to develop groundbreaking technology and therapies alike.

We offer personalized services ranging from full-service support & consulting services to simply providing the facilities to conduct your own research.

Whether K2 Biolabs performs the work for you, or your team conducts science in our facility, the technology remains yours.



FEATURES

BSL-2 Labs

Privacy Labs

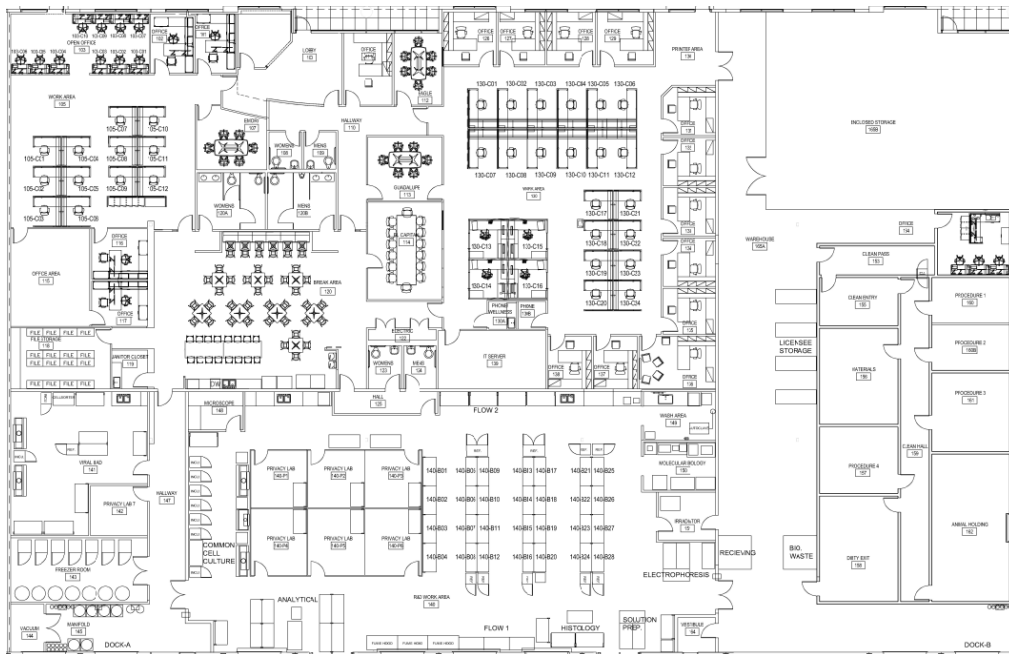
Office space

Conference Rooms

Breakroom

Warehouse &

On-site store



FREE



PARKING

“Research is the beginning, Success the Summit”



FACILITY



VIVARIUM OVERVIEW

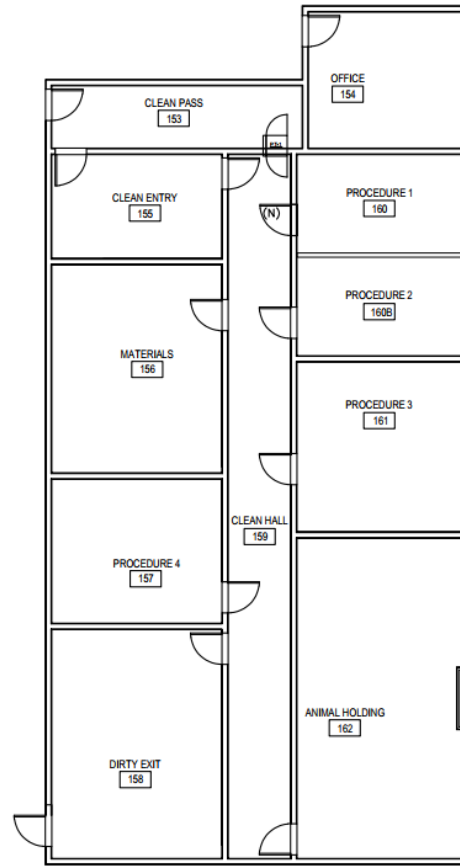
Four reservable procedure rooms

Surgical and necropsy suites

Current capacity of up to ~6000 rodents

Retained seasoned Veterinarians

AAALAC-I® accredited

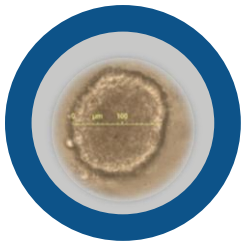


VIVARIUM

“Research is the beginning, Success the Summit”

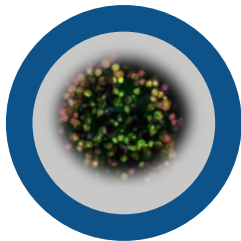


In Vitro



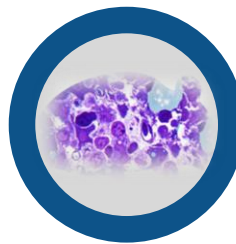
Cancer Cell Lines
Human Primary Cells
Viral & Non-Viral Gene
Mod
Cell-based Assays
X-Ray Irradiation
Closed System &
Auto Processing Methods

In Vivo



AAALAC-I® Accredited
Surgical Suites
Breeding & Husbandry
Humanized Models
PK/PD
Toxicity Studies (chronic/acute)
Tissue Distribution
X-Ray Irradiation

Analytical



IVIS™ Imaging
Histology / IHC
Live Cell Imaging
Luminex™ Multi-Plex
Western Electrophoresis
Flow Cytometry
Mass Spectrometry
Gene Expression Analysis

TECHNICAL CAPABILITIES AT-A-GLANCE

“Research is the beginning, Success the Summit”

Oncology Lines

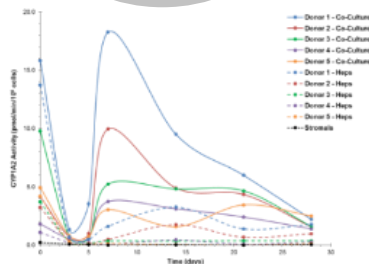
NK™ Cells
X-Ray Irradiator
2D/3D / Co-culture
HTP capacity

Primary & SC's

Tissue Sourcing
Custom Isolations
2D & 3D / Co-culture
Hepatic, Cardio, Adipose,
Neuronal

Xenografts

PDX / MTM
Whole Blood
Feeder Cells
Tissue Sourcing
Cloning / Constructs



Molecular Biology

qPCR
Western Electrophoresis
Analytical Chemistry
Gene Expression
Analysis

Imaging

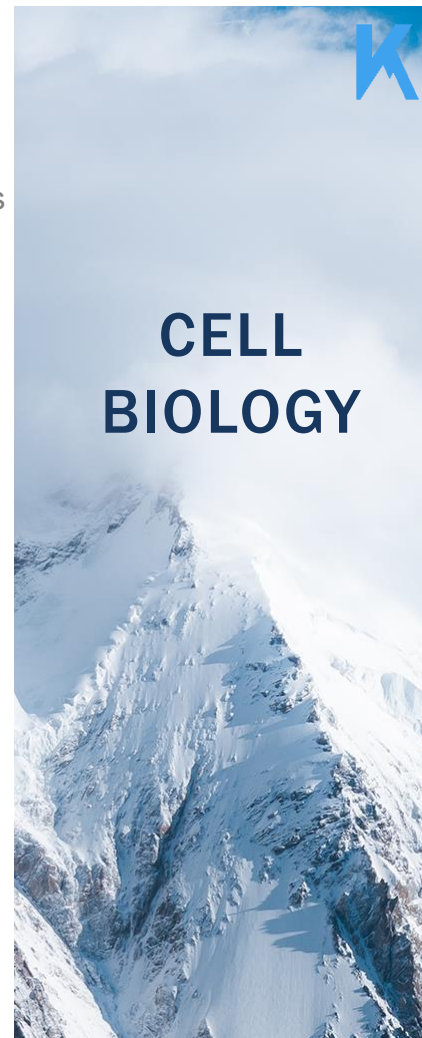
Microscopy
Live Cell Imaging
High Content Analysis
Flow Cytometry

Media

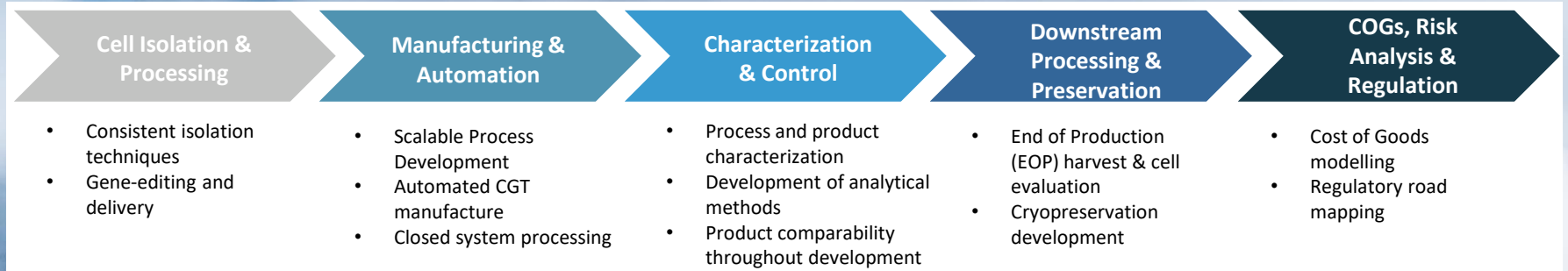
Formulations
Development
Scalable Production
Supplement Sourcing

CELL BIOLOGY

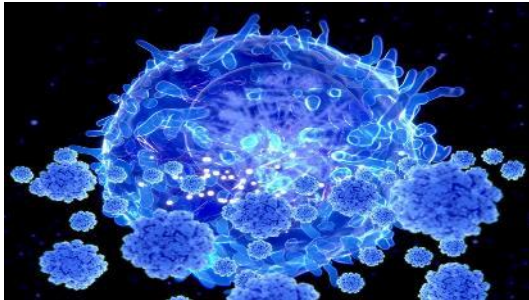
“Research is the beginning, Success the Summit”



Process Development: Cell Therapy



Immune Cells



Courtesy of: [Nature](#)

Gene Delivery



Courtesy of: [Cell & Gene](#)

K2 has a combined 19 years of experience in developing and optimizing manufacturing processes for CAR-T, TCR-T and TILs using both viral and non-viral gene delivery methods.



We have team members that can aid with:

GLP

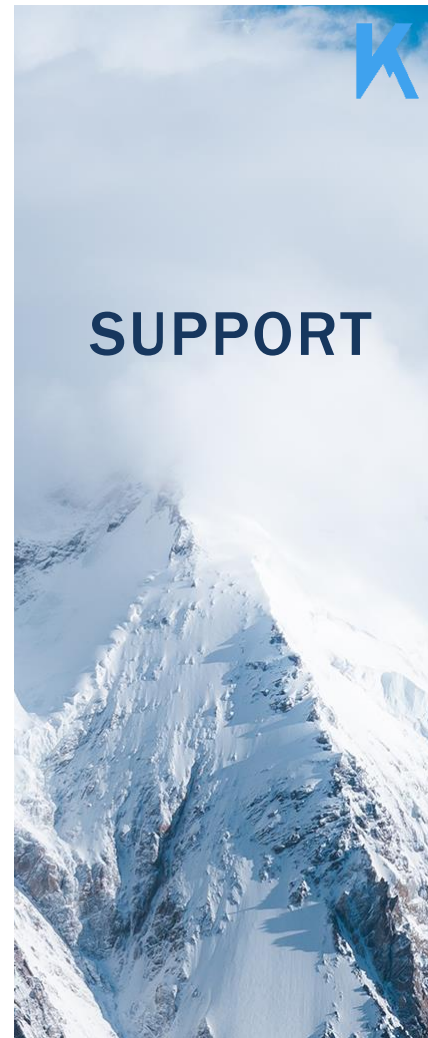
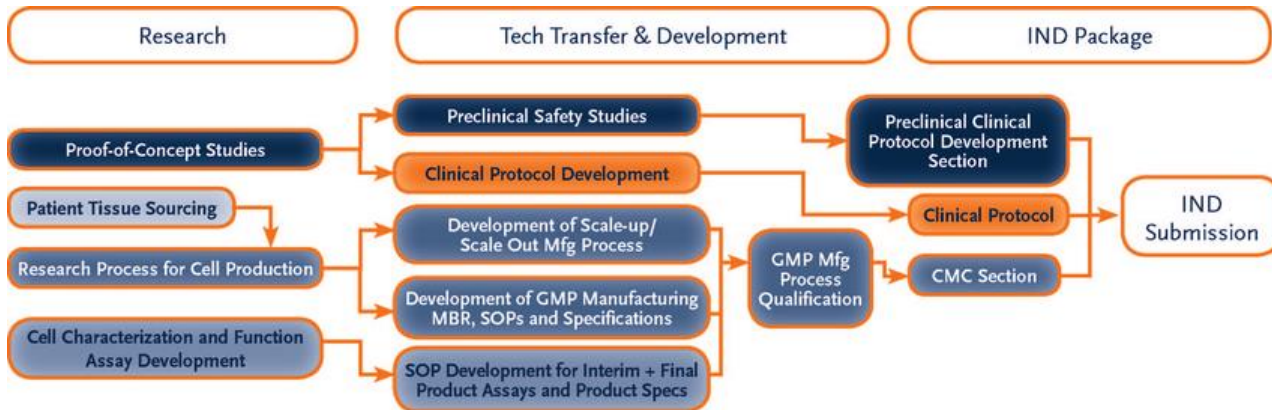
Regulatory & Quality Assurance

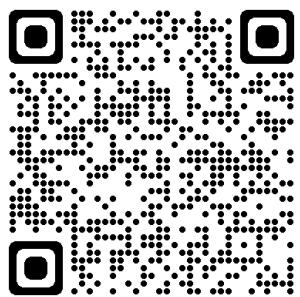
Process Optimization

Method Development and Qualification

Regulatory Filings

At K2 Biolabs, we have the resources to take you from concept to clinic.



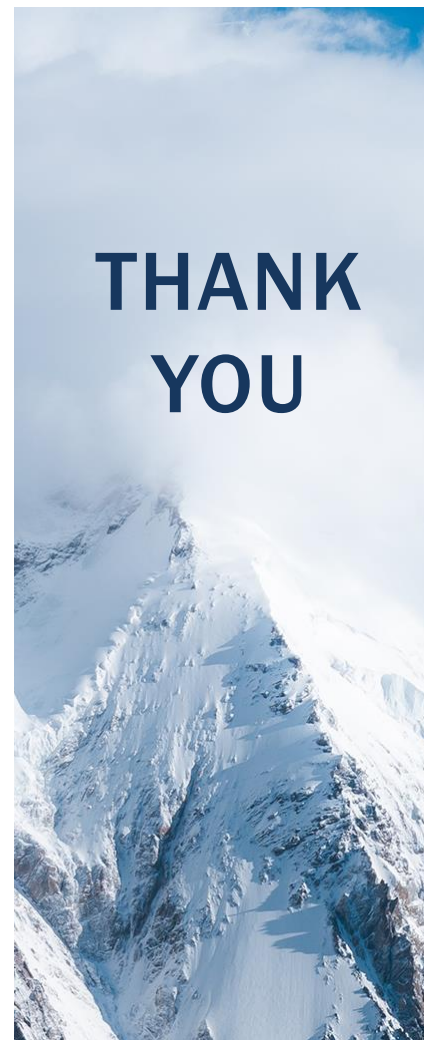


K2bio

Science shouldn't be a solo climb



www.k2-biolabs.com - info@k2-biolabs.com



THANK
YOU