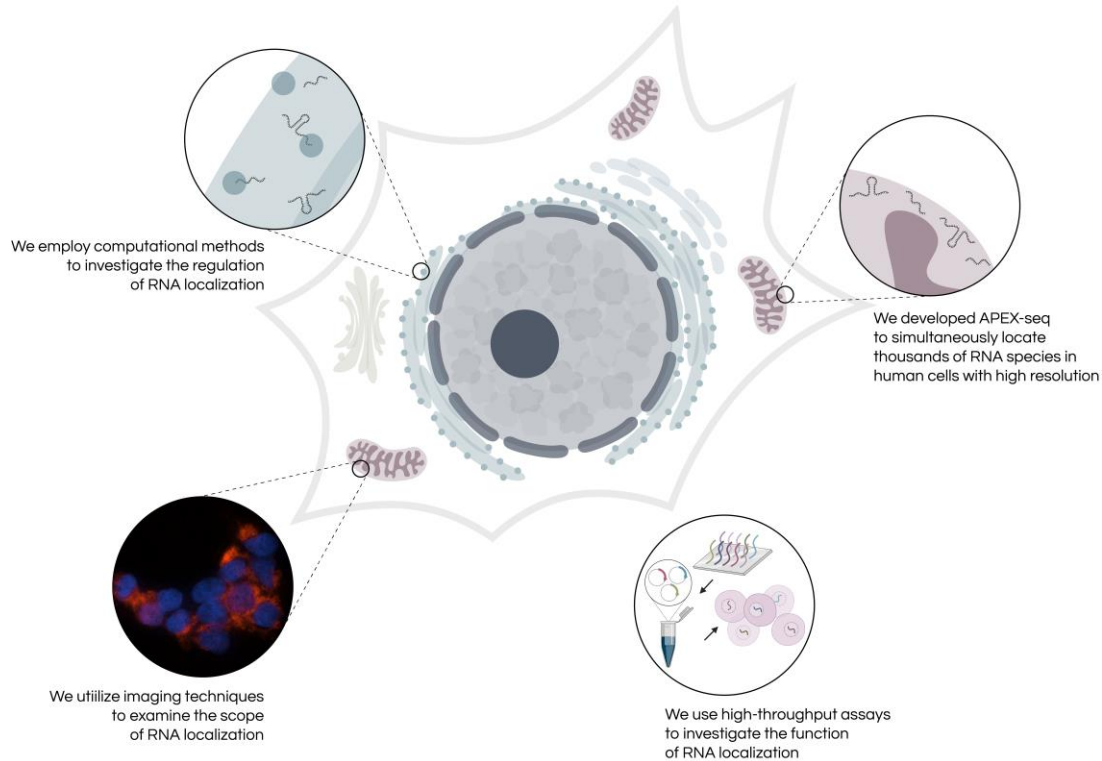




The location of biomolecules within a cell influences gene regulation and maintenance

The Fazal Lab studies subcellular RNA localization to discover what it can teach us about development, neurodegeneration, and cancers



<https://fazallab.org>
furqan.fazal@bcm.edu





Furqan Fazal

ASSISTANT PROFESSOR AND CPRIT
SCHOLAR IN CANCER RESEARCH



Xuemei Wang

LAB MANAGER

Imaging Approaches



Subhashree Pradhan

SENIOR STAFF SCIENTIST

Nuclear Membrane-less Computational Approaches
Organelles

APEX Proteomics



Madeline Rasband

BIOINFORMATICIAN

RNA Transport



Noah Keogh

RESEARCH TECHNICIAN

Massively-parallel
Reporter Assays



Surbhi Sharma

POSTDOCTORAL FELLOW

Technology Development
RNA Modifications

ROTATION STUDENTS & STUDENT HELPERS



Adebowale (Lex) Alade

Technology Development



Evelyn de Groot

RNA Transport

FAZAL LAB ALUMNI

Trevor Godfrey

ROTATION STUDENT, 2022

Brennan Keogh

STUDENT HELPER, 2022

 @FurqanMFazal