

Diversity, Disparities and Community Engagement in  
Healthcare Research Workshop:



# Suggested frameworks for addressing SDOHs and closing gaps

September 13, 2022

DAVID S. BUCK, MD, MPH Professor & Associate Dean for Community Health; University of Houston Tilman J Fertitta Family College of Medicine

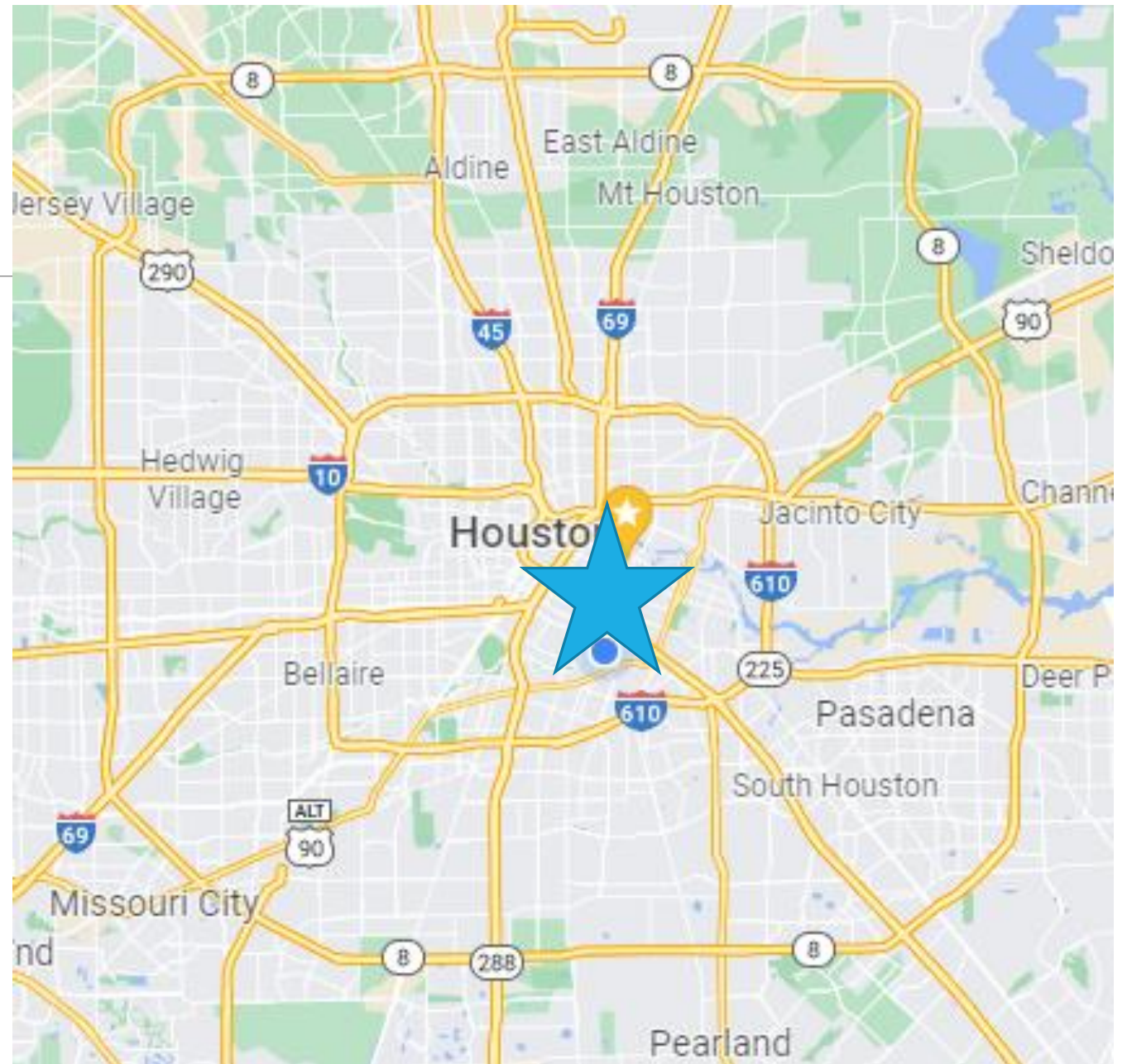
# Community Engaged Health Framework\*

---

- ❖ Inclusion of all stakeholders
  - ❖ Identify clear roles and responsibilities of all stakeholders
  - ❖ Requires acknowledging the power in the relationship and reassessment of that power
  - ❖ Empower and share power with the “patient” or client or partner
  - ❖ Accommodate the “patient” to identify their values and opportunity to improve their health (Values Based Care)
  - ❖ Leverage data to drive better decisions
- Codified in Patient Care Intervention Center’s Platform with United Way

\*Barker S.L., Maguire N., Gearing R.E., Cheung M., Price D., Narendorf S.C. & Buck D.S., *Community-engaged healthcare model for currently under-served individuals involved in the healthcare system*, SSM - Population Health (2021), doi: <https://doi.org/10.1016/j.ssmph.2021.100905>.

# Third Ward & East End



# Why Third Ward and East End?

---

- Mission
- Neighbors
  - Proximity
  - Health inequalities



# Third Ward

- History
  - Settled by freed slaves after Civil War
  - Home to historic Black institutions
  - Epicenter of civil rights movement
  - Gentrification
- Strengths
  - Community pride, civic engagement
  - Resilient
  - More than 100 churches

Third Ward: Then & Now

<https://www.youtube.com/watch?v=nAMTsQp2dRA>



# Goal: Establish Partnerships

1. **Develop methodology for community engagement**
2. Build community health worker infrastructure
3. Engage community health centers
4. Build methodology for Household Centered Care/ IPE
5. Develop model to improve health outcomes

# Community Engagement Plan

---



Build relationships  
and trust



Work with local  
institutions



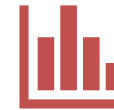
Facilitate Community  
Working Groups



Include residents with  
lived experience



Organize for  
ownership



Use existing data  
and EB programs

Health – Not Just Health Care!

# Future Health System

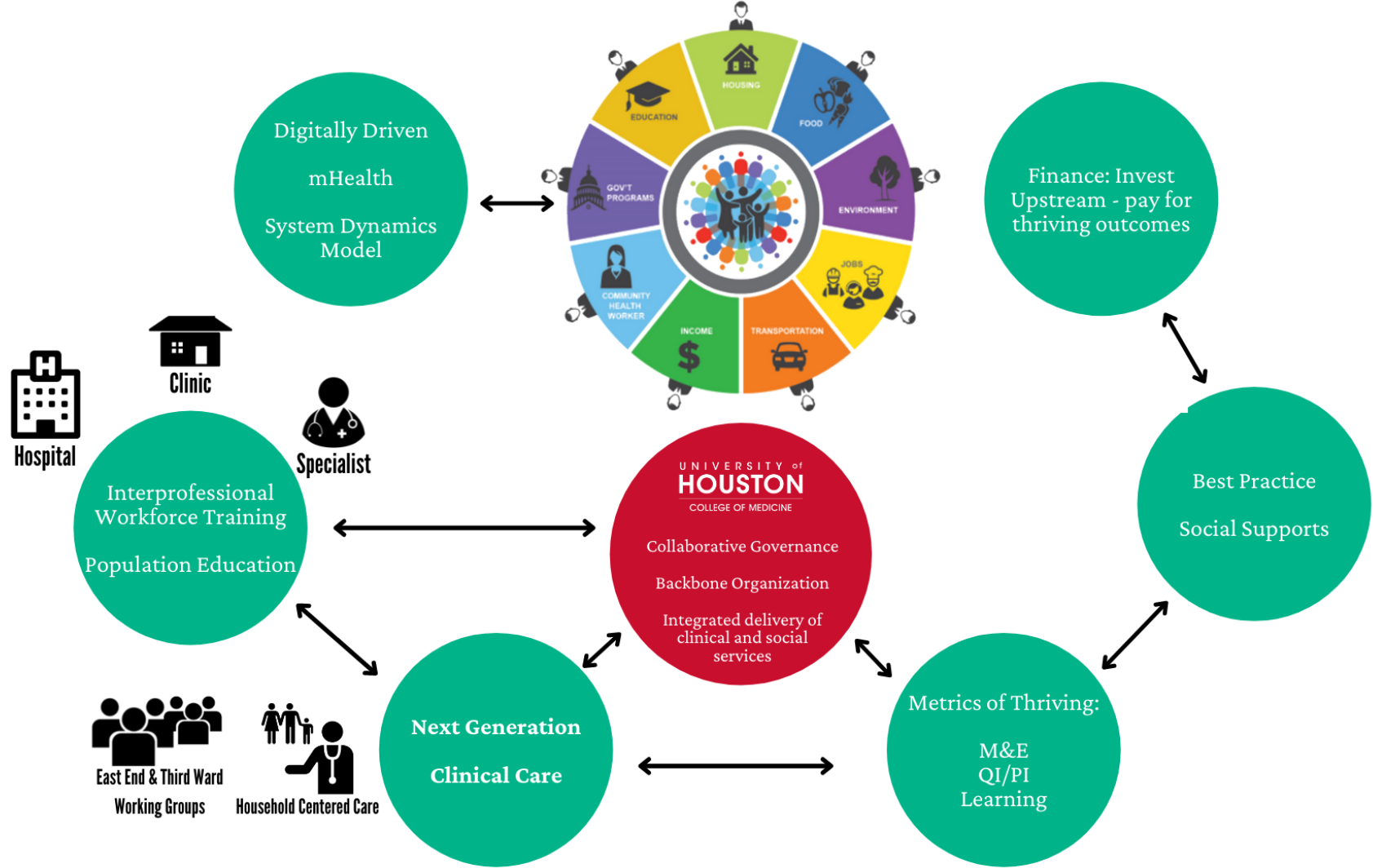
---

- Emphasis on vitality, not illness
- Person and family centered
- Focus on friends, community supporting families
- Community as full partner
- Collaborative management of health, social supports
- Medicine tightly integrated
- Minimize acute care





# Health Commons Concept



Source: Constructing the UHCOM Community Commons, D. Aylward, July 2021

## CHWs + Community

---

- Participate in Working Groups
- Participate/recruit at community events
- Build relationships with key partners
- Long-term CHWs may be housed with partners, including UH Family Health Clinic

# United Way of Greater Houston Integrated Client Journey (ICJ)

Three areas of focus...

1 Right agency expertise connected



2 Coaching and client support

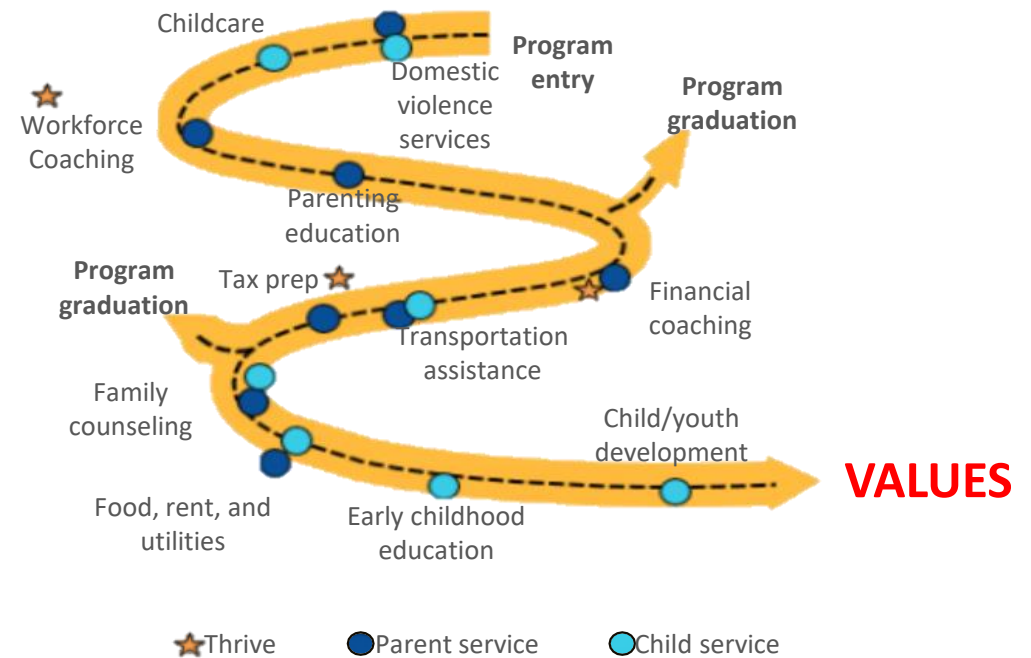


3 Client journey tool & resource map



...to create an integrated client journey

## Example Client Journey



# Integrated Client Journey

## Unified Intake and Outcomes Tracking

Crisis

### Basic needs

- Food, Housing, Transportation

Vulnerable

### Escape from violence

- Legal (civil), Relationship Safety, Support System

Stable

### Financial Stability

- Adult education, Employment, Income, Legal – Criminal Justice, Money Management, Workspace Skills

Self-Sufficiency

### Physical and Behavioral Healthcare

- Health care Access, Functional Ability, Life Skills (Household mgmt.), Mental Health, Physical Health, Substance Use

Thriving

### Early Childhood and Youth Development

- Child Education, Childcare, Parenting

# Select References

1. Data sets and characteristics: Hillemeier M, Lynch J, Harper S, Casper M. Data Set Directory of Social Determinants of Health at the Local Level. Atlanta: U.S. Department of Health and Human Services, Centers for Disease Control and Prevention; 2004.
2. SDoH review: National Academies of Sciences, Engineering, and Medicine 2019. *Integrating Social Care into the Delivery of Health Care: Moving Upstream to Improve the Nation's Health*. Washington, DC: The National Academies Press. <https://doi.org/10.17226/25467>.
3. WHO Guidance: Ethics & Governance of AI for Health 28 June 2021  
<https://www.who.int/publications/i/item/9789240029200>
4. <https://hai.stanford.edu/news/how-flawed-data-aggravates-inequality-credit>;  
<https://www.washingtonpost.com/business/2020/10/16/how-race-affects-your-credit-score/>
5. <https://www.brookings.edu/research/reducing-bias-in-ai-based-financial-services/>
6. Berwick, Donald M. “The Moral Determinants of Health.” *Jama*, 2020, <https://doi.org/10.1001/jama.2020.11129>
7. Pickett & Wilkinson. The Spirit Level: Why Greater Equality Makes Societies Stronger. New York: Bloomsbury Press, 2010.
8. Mullainathan, S., & Shafir, E. Scarcity: Why having too little means so much. Times Books/Henry Holt and Co. 2013
9. Barker SL, Maguire NJ, Das S, Bryant V, Mahata K, Buck DS. Values-Based Interventions in Patient Engagement for those with Complex Needs. *Population Health Management* 2019
10. Buck DS, Brown CA, Hickey JS. The Jail Inreach Project: Linking Homeless Mentally Ill to Community Health Services. *Best Practices Column. Psychiatric Services*. Feb 2011; 62(2):120-122.

# Q&A

[dsbuck@uh.edu](mailto:dsbuck@uh.edu)

