



TEXAS SOUTHERN UNIVERSITY



# DIVERSITY, DISPARITIES, AND MINORITY HEALTH ENGAGEMENT 101

VERONICA B. AJEWOLE, PHARMD, BCOP  
ASSOCIATE PROFESSOR OF PHARMACY PRACTICE  
TEXAS SOUTHERN UNIVERSITY  
ONCOLOGY CLINICAL PHARMACIST  
HOUSTON METHODIST HOSPITAL

SEPTEMBER 13, 2022

PRESENTATION AT DIVERSITY, DISPARITIES AND COMMUNITY ENGAGEMENT IN  
HEALTHCARE



National Institute  
on Minority Health  
and Health Disparities



CANCER PREVENTION & RESEARCH  
INSTITUTE OF TEXAS



FUNDED BY:  
CENTER FOR MEDICARE AND MEDICAID SERVICE



## Advance Health Equity through CHWs



HOUSTON HEALTH  
DEPARTMENT

## DISCLOSURE

- Veronica Ajewole is the founding Director of the Community Engagement Core of NIH/NIMHD-Funded, TSU Center for Biomedical and Minority Health Research, PI/Director of CPRIT-funded TSU Breast Cancer Screening and Prevention Center, PI/Director of CMS-funded TSU Aggressive Prostate Cancer Study and PI/Director for CDC/HHD funded Advance Health Equity program
- No relevant disclosure

# OBJECTIVES

- Disparity, Diversity, and Equity
- Promoting Minority Health Equity through Community Engagement

# WHAT IS HEALTH DISPARITY?

## CDC defines health disparities as

- Preventable differences
- In the burden of disease, injury, violence, or opportunities to achieve optimal health
- Experienced by socially disadvantaged populations

## Healthy People 2020 defines health disparities as

- Particular type of health difference
- Closely linked with social, economic, and/or environmental disadvantage

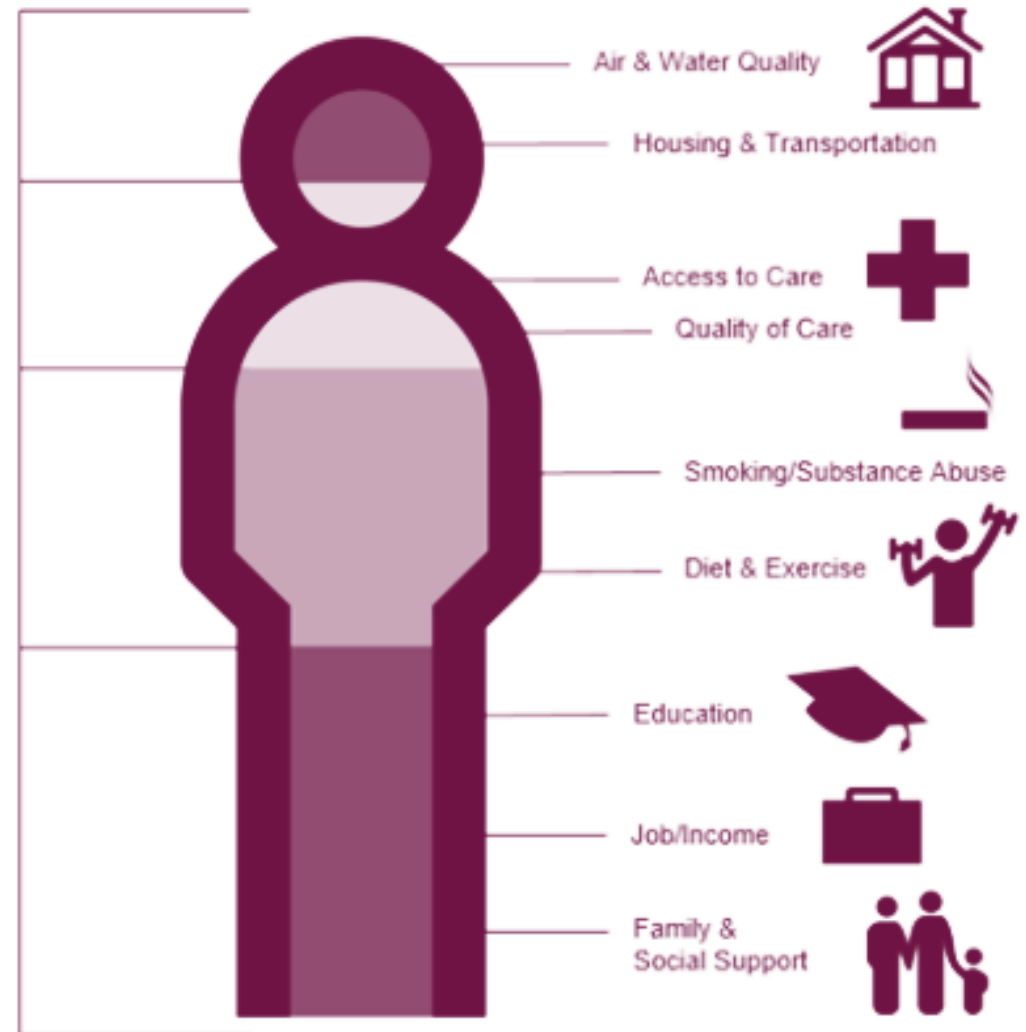
# SOCIAL WELL-BEING AND OVERALL HEALTH

**10%**  
Physical Environment

**20%**  
Clinical Care

**30%**  
Health Behavior

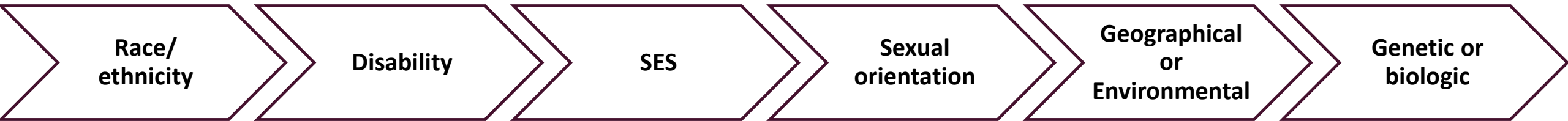
**40%**  
Social Economic



---

# DISPARITIES IN HEALTHCARE

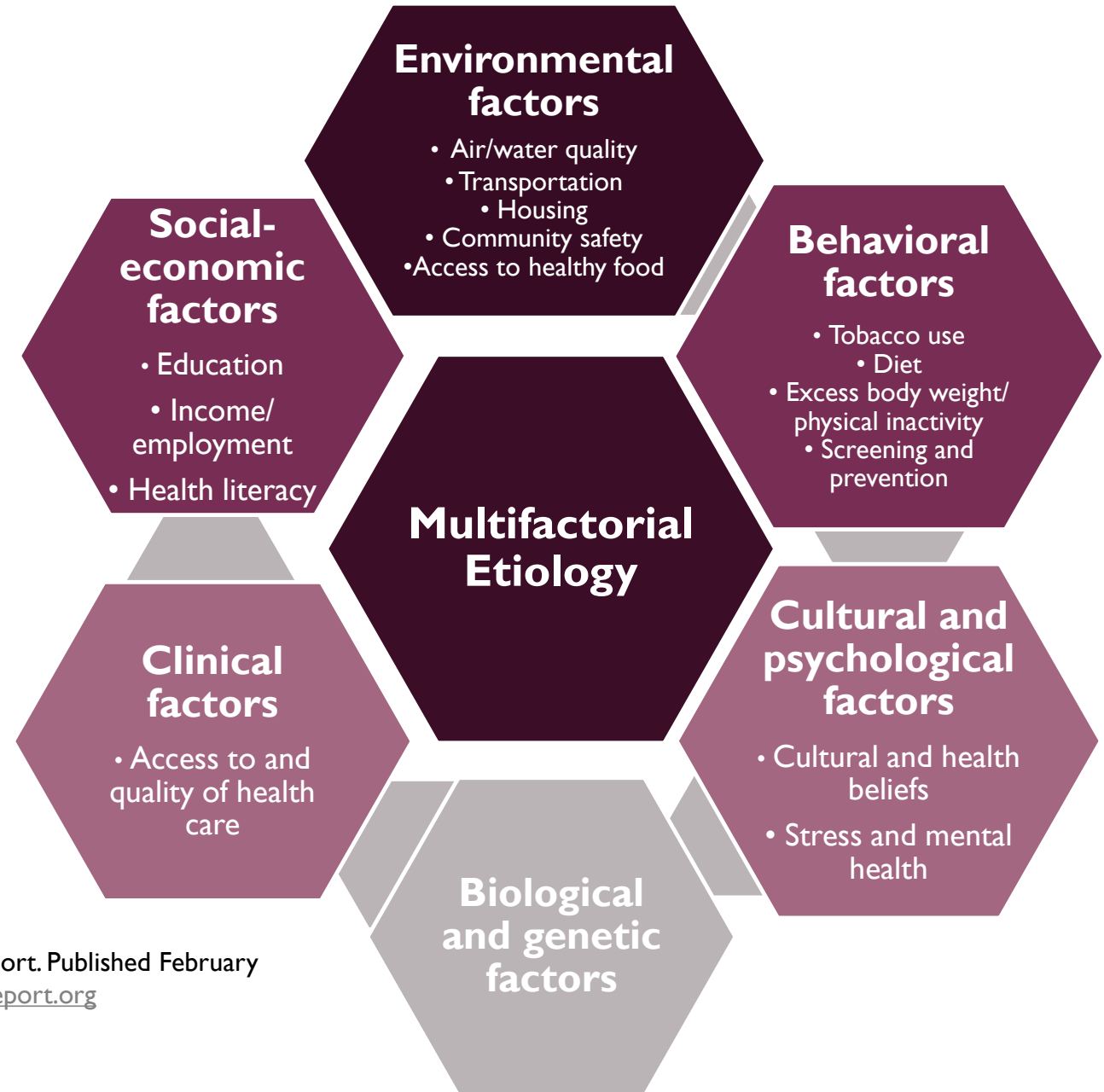
## Disparities Observed Across Many Different Groups



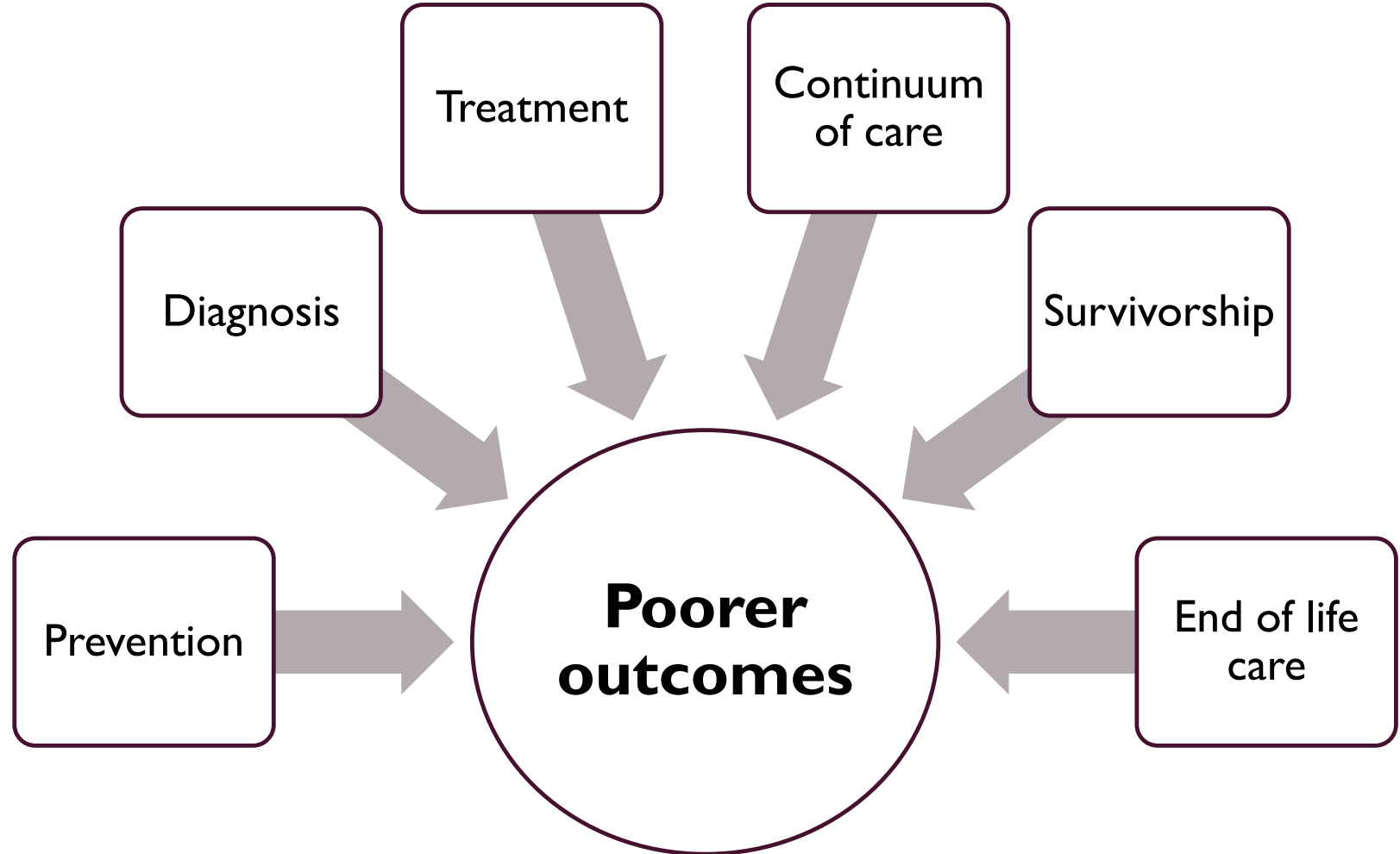
## Disparities Observed Across Many Different Groups



# CAUSES OF HEALTH DISPARITIES



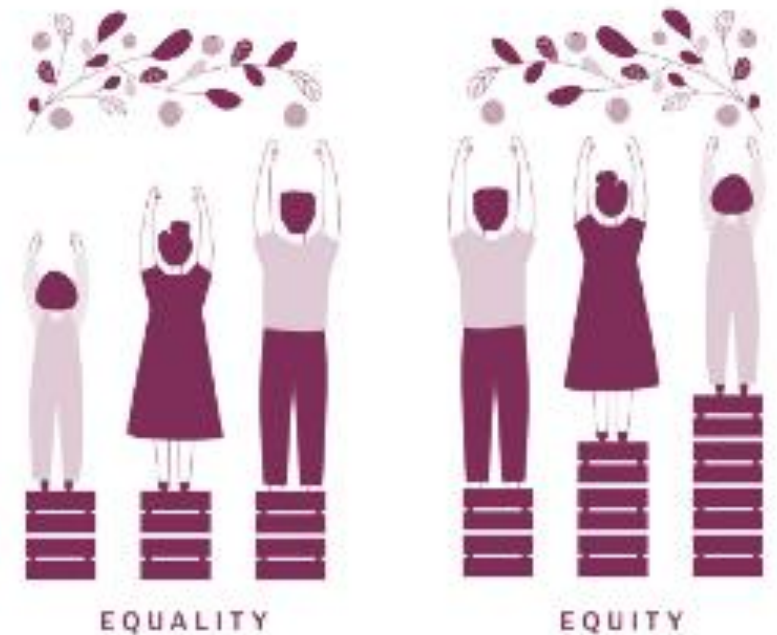
# IMPACT OF DISPARITIES ON MINORITY HEALTH



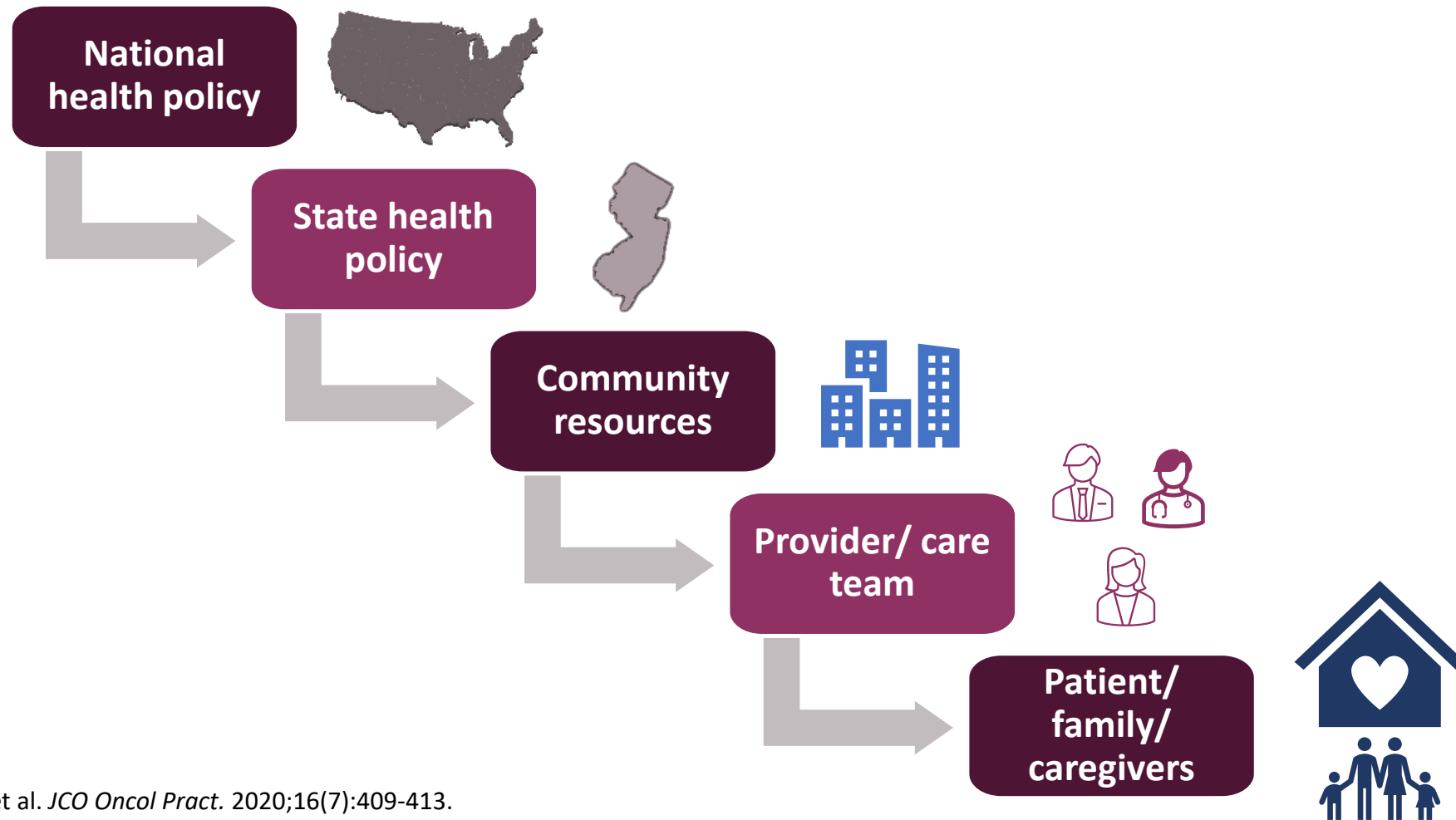


# WHAT IS HEALTH EQUITY?

- According to CDC: health equity is achieved when
  - Every person has the opportunity to attain his or her full health potential
  - None is disadvantaged from achieving this potential due to social position or other socially determined circumstances



# ACHIEVING EQUITY REQUIRES A MULTILEVEL APPROACH



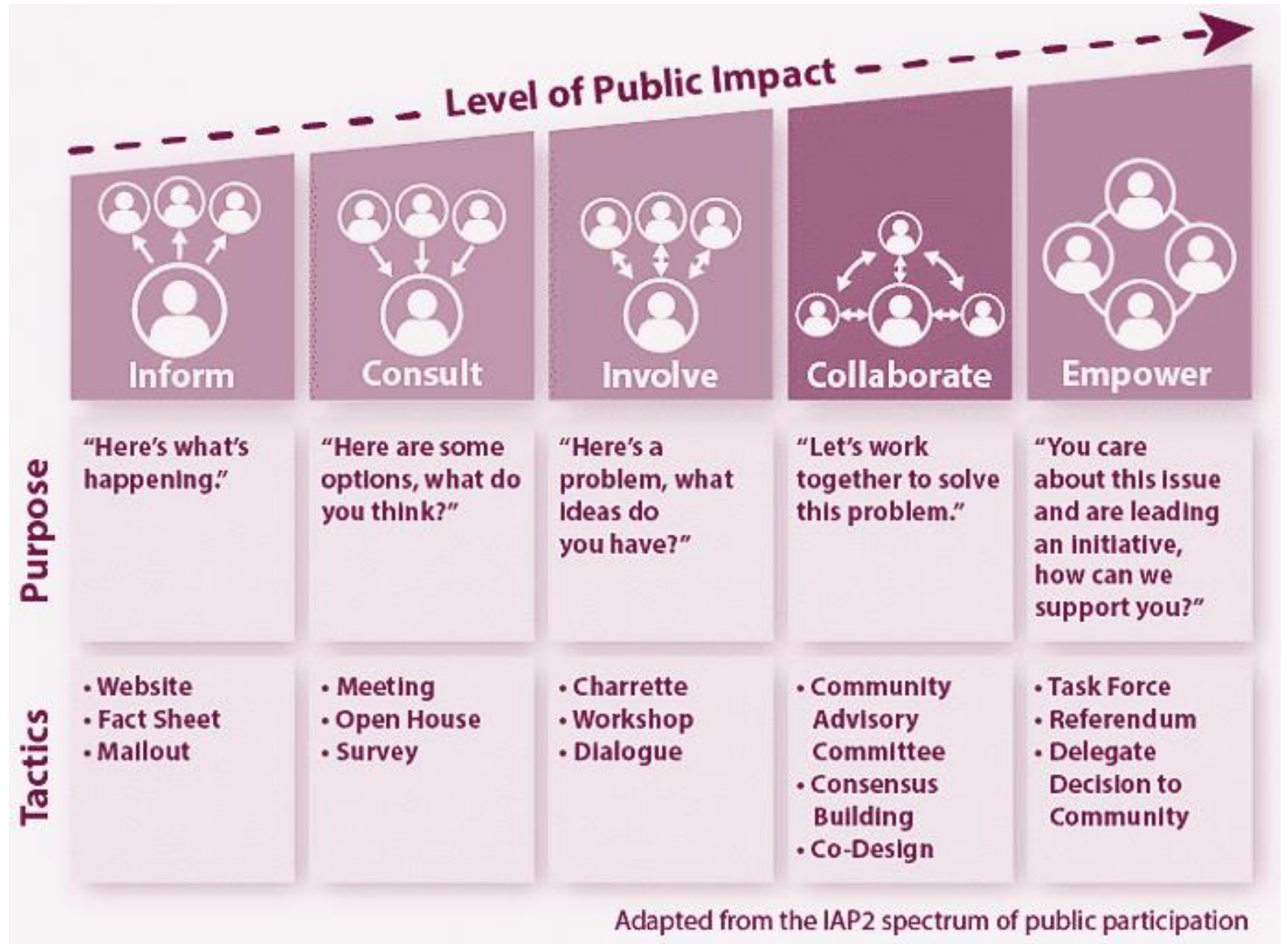
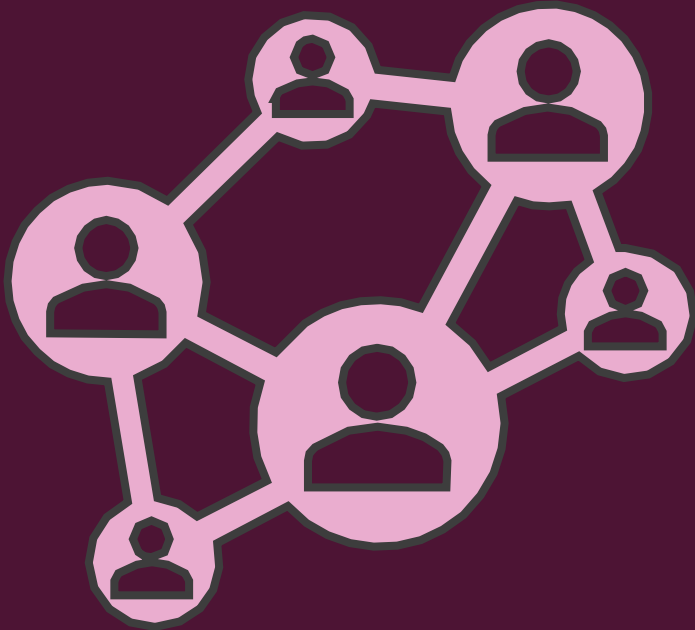
---

# HOW TO ADDRESS HEALTH DISPARITIES AND PROMOTE HEALTH EQUITY



Levit LA, et al. *JCO Oncol Pract.* 2020;16(7):422-430; Palmer NRA, et al. *J Clin Oncol.* 2014;32(36):4087-4094; Polite BN, et al. *J Clin Oncol.* 2017;35(26):3075-3082.

# WHAT IS COMMUNITY ENGAGEMENT?



# WHAT COMMUNITY ENGAGEMENT ENTAILS?



## Meaningful Community and Stakeholder Engagement

Plain  
language

Information  
sharing

Transparency

Dialogue

Attitude and  
behavior

Active  
listening

Relationship  
building



QUESTIONS

THANK YOU



TEXAS SOUTHERN UNIVERSITY



Gulf Coast Consortia

